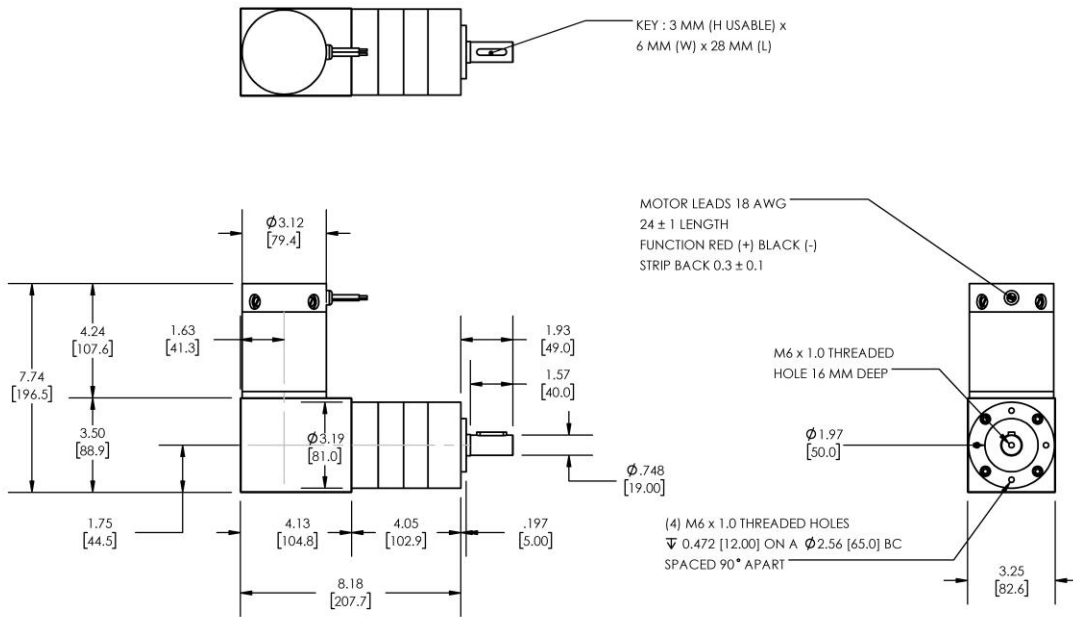


**Model Number:**

**MMP D33-455F-36V GRA81-150**



DIMENSIONS ARE INCHES [MM] UNLESS OTHERWISE STATED

PLANETARY GEARMOTOR OUTPUT PARAMETERS:	VALUE	UNITS	TOLERANCE
Gearhead Ratio (exact)	149.90 : 1		
Gearhead Shaft Output Speed (at full-load)	21	RPM	MAX
Gearmotor Rated Continuous Torque	538	In-Lbs	MAX
Gearmotor Rated Peak Torque	<b>2124++</b>	In-Lbs	----
Gearhead Standard Backlash	36	Arc Minutes	MAX
Gearhead Efficiency	70%	----	----
Output Shaft Radial Load Capacity	225	Lbs	MAX
Output Shaft Axial Load Capacity	45	Lbs	MAX
Gearmotor Total Weight	16	Lbs	MAX

**++ All Peak Torque values are dependent upon duty. Contact our sales office for details.**

DC MOTOR PERFORMANCE PARAMETERS:	VALUE	UNITS	TOLERANCE
Rated DC Voltage	36	DC VOLTS	----
Rated Continuous Current	7.3	AMPERES	----
No-Load Speed	3871	RPM	MAX
Rated Speed	3221	RPM	+/- 15%
Rated Continuous Power Out	196	WATTS	+/- 15%
Rated Continuous Torque	82	OZ-IN	----
Peak Torque (motor only)	362	OZ-IN	----
No-Load Current	0.71	AMPERES	MAX
Back EMF Constant (Ke)	9.3	V/KRPM	+/- 10%
Torque Constant (Kt)	12.6	OZ-IN/AMP	+/- 10%
DC Armature Resistance	0.83	OHMS	+/- 15%
Armature Inductance	0.53	mH	+/- 15%
Armature temperature	155	DEG. C	MAX

**NOTES:**

- ENCODER & BRAKE OPTIONS AVAILABLE – [FOLLOW THIS LINK FOR DETAILS](#)
- NEMA MOUNTING FLANGE OPTION AVAILABLE – [FOLLOW THIS LINK FOR DETAILS](#)